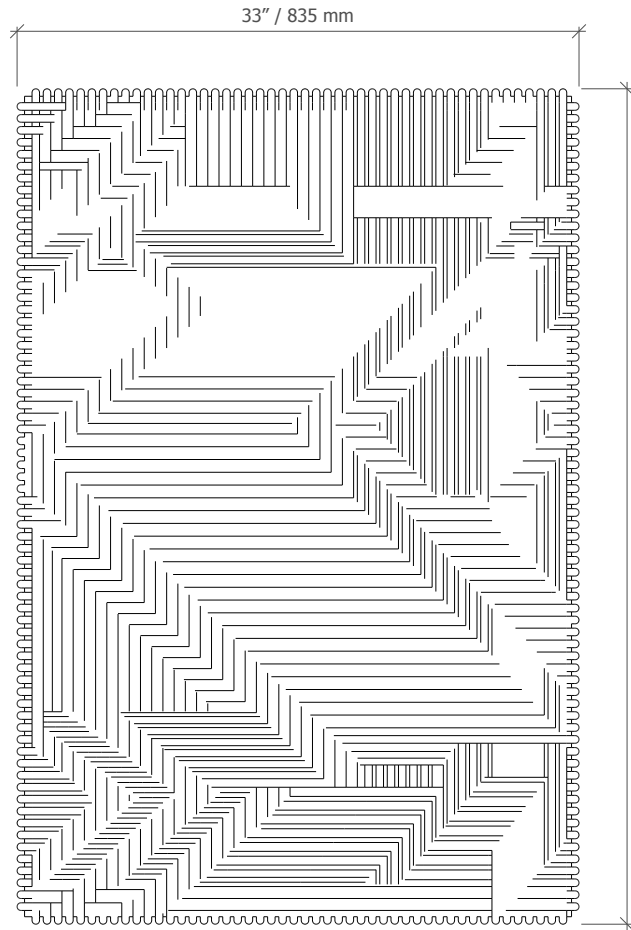
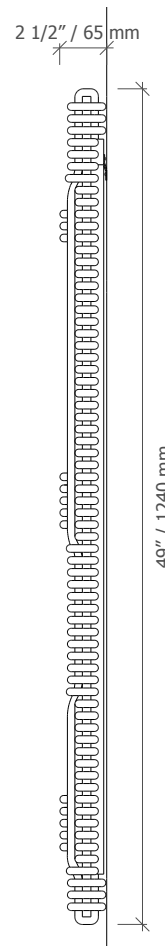


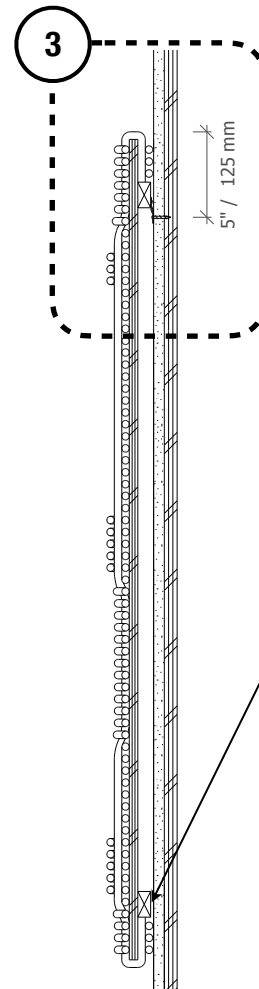
NOTE: You will need about a 1" (25 mm) clearance to lift panel up onto the wall mounted cleat. This means if you are mounting at the top of a ceiling, the panels will need a minimum 1" (25 mm) between the top of the rope and the ceiling.



1 FRONT ELEVATION
SCALE: N/A

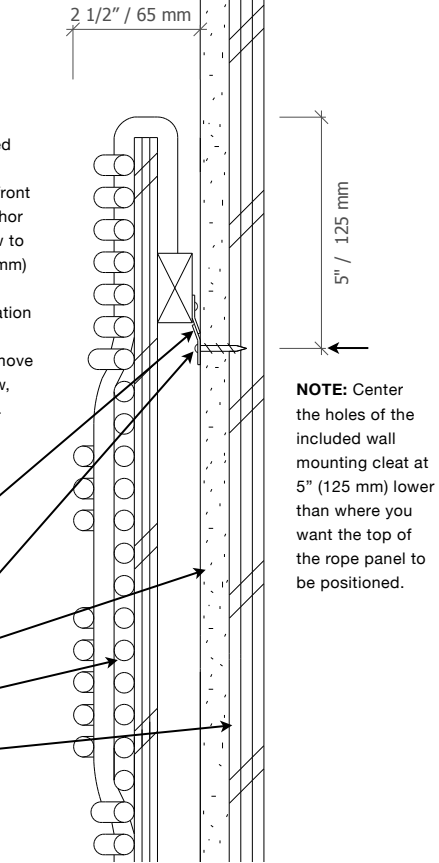


2 SIDE ELEVATION / SECTION
SCALE: N/A



NOTE: If security hardware was requested, included connector will be here, centered to front face of panel. Anchor the included screw to wall at 3 3/4" (95 mm) above lowest rope edge, or mark location with pencil after hanging panel, remove panel, install screw, then rehang panel.

- French cleat (included)
- Walldog screw (included)
- Drywall
- Rope
- Plywood backer board (optional)



NOTE: Center the holes of the included wall mounting cleat at 5" (125 mm) lower than where you want the top of the rope panel to be positioned.

3 DETAIL
SCALE: N/A



BROCOLOCO

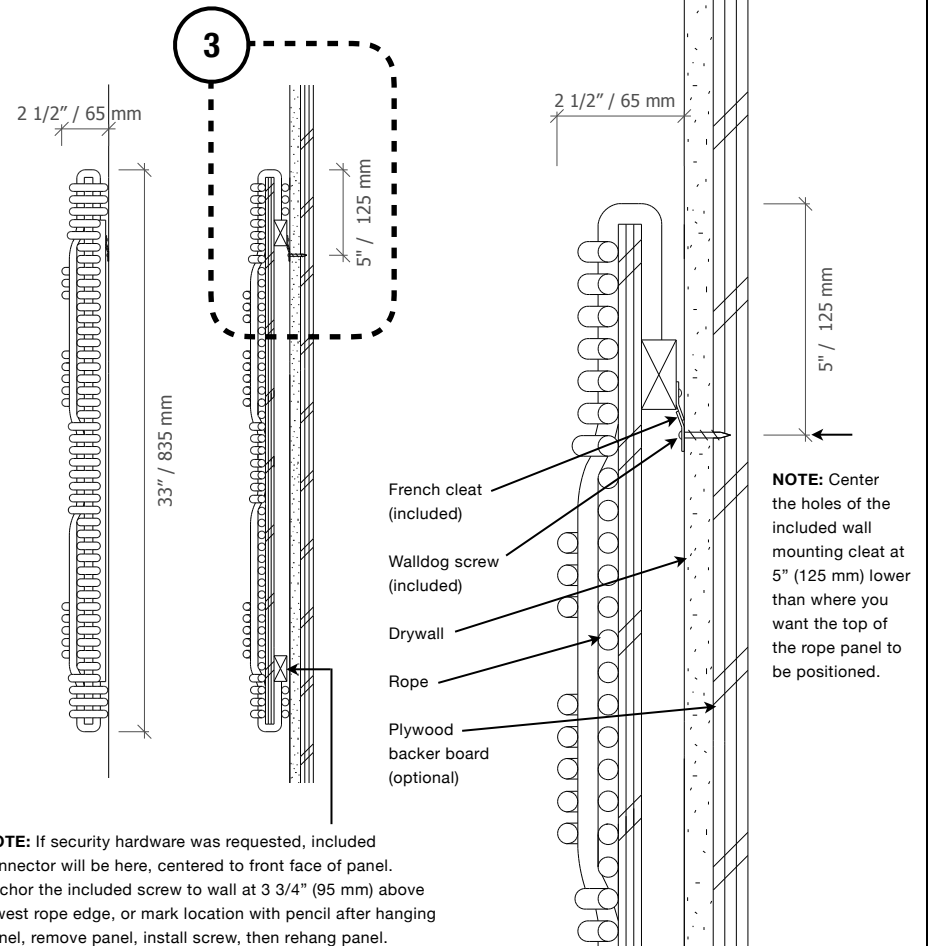
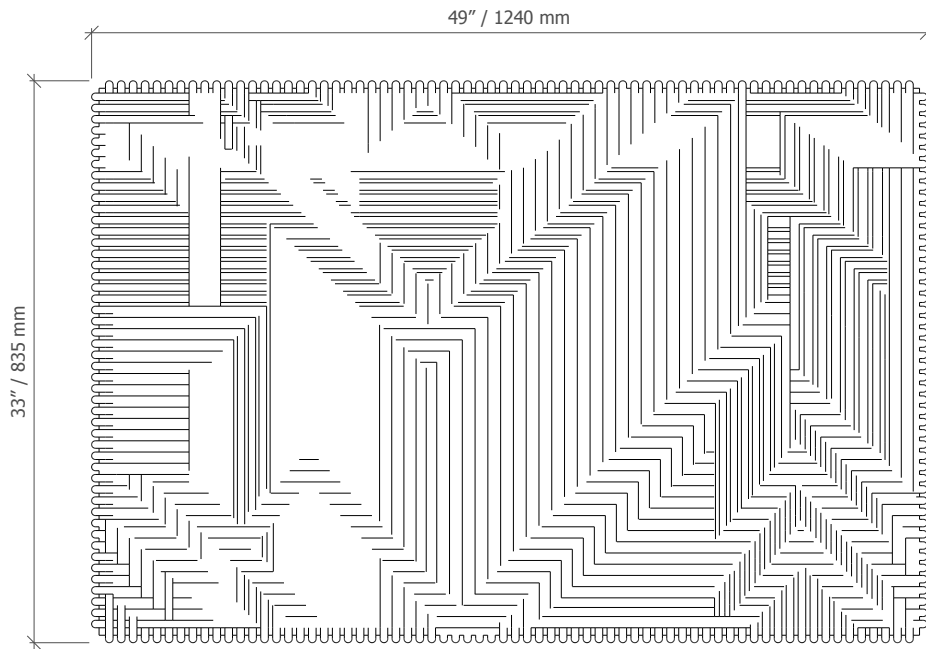
WOVENWALL™ | Series 2 | Rope Panels

Vertical orientation // wall mounting instructions.

Maintenance: blow free of dust with compressed air or vacuum occasionally.

01

NOTE: You will need about a 1" (25 mm) clearance to lift panel up onto the wall mounted cleat. This means if you are mounting at the top of a ceiling, the panels will need a minimum 1" (25 mm) between the top of the rope and the ceiling.



NOTE: If security hardware was requested, included connector will be here, centered to front face of panel. Anchor the included screw to wall at 3 3/4" (95 mm) above lowest rope edge, or mark location with pencil after hanging panel, remove panel, install screw, then rehang panel.

1

FRONT ELEVATION

SCALE: N/A

2

SIDE ELEVATION / SECTION

SCALE: N/A

3

DETAIL

SCALE: N/A



BROCOLOCO

WOVENWALL™ | Series 2 | Rope Panels

Horizontal orientation // wall mounting instructions.

Maintenance: blow free of dust with compressed air or vacuum occasionally.

02

